

# 1. Directions

## ■ Venue (Seoul City Hall)

■ **Address:** Seoul City Hall – 110 Sejong-daero, Jung-gu, Seoul , Korea (Multipurpose Hall, 8F)



## ■ Direction to the Venue(From Incheon International Airport to Seoul City Hall by Limousine Bus)



### 1. Bus Number: 6701- KAL Limousine

- First Bus 04:50 / 20~30min Interval / Last Bus 22:49 / Takes 60~70min

- Get-on : Incheon Airport Bus Stop(East4A, West10B) / Get-off : Bus stops in front of Newkukje hotel(Walk

to the Seoul City Hall for 5min, please refer to the map below)

- Fee : 16,000Won, Child(6-12): 10,000Won

\* City Hall→Incheon Airport: Bus stops in front of Newkukje hotel

(First Bus 05:12~ 25min Interval /06:02~ 20min Interval Last Bus 18:47 / Takes 60~70min)

### <Bus Schedule from Incheon Airport>

Please be advised that actual times may vary depending on traffic conditions.

Travel Time : 60~70min

Departure time					
04:50	05:18	06:07	06:51	07:22	07:45
08:09	08:32	09:01	09:23	09:50	10:09
10:31	10:50	11:11	11:31	11:50	12:11
12:30	12:57	13:17	13:36	13:53	14:18
14:43	15:11	15:36	16:00	16:23	16:45
17:11	17:29	17:51	18:12	18:37	18:56
19:23	19:51	20:22	20:52	21:24	22:04
22:49					

### <Bus Schedule from New Kukje Hotel>

Please be advised that actual times may vary depending on traffic conditions.

Travel Time : 60~70min

Departure time					
05:12	05:37	06:02	06:22	06:42	07:02
07:27	07:52	08:17	08:42	09:07	09:32
09:57	10:22	10:47	11:07	11:27	11:47
12:07	12:27	12:47	13:07	13:27	13:47
14:12	14:32	14:52	15:12	15:37	16:02
16:27	16:52	17:17	17:42	18:02	18:27

## 2. Bus Number: 6005

- First Bus 06:35 / 45min Interval / Last Bus 23:00/ Takes 70min

- Get-on: Incheon Airport Bus Stop (5B)/ Get-off: In front of Seoul Finance Center (Walk to the Seoul City Hall for 3min, please refer to the map below)

- Fee: 15,000 Won

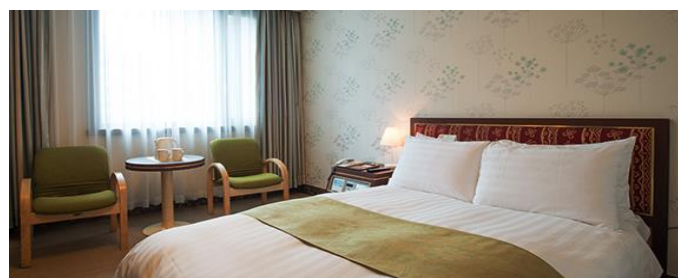
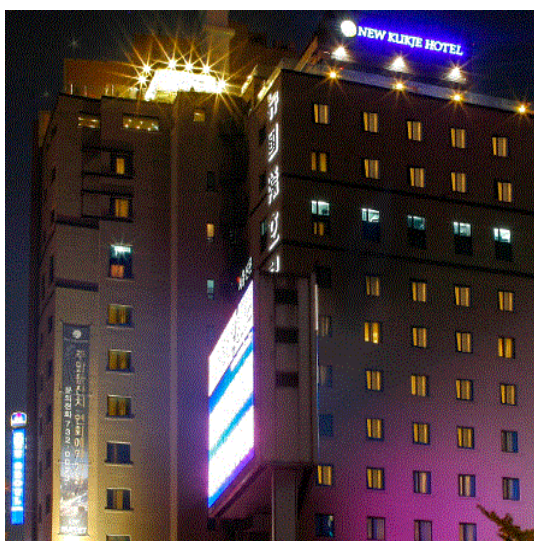
\* City Hall→Incheon Airport: Bus stops at City Hall Subway Station Gate2, In front of Deoksgung(10min walking distance from Hotel)

(First Bus 04:35 / 45min Interval / Last Bus 20:40/ Takes 70min)

## [Map]



## New Kukje Hotel (뉴국제호텔)



New Kukje Hotel located in the best downtown of Seoul is tourist hotel that leads a pivotal role as a center of business and tourism of Seoul. New Kukje Hotel located just next to Seoul Municipal Hall currently possesses diversified guest rooms (total 142 rooms). Furthermore, as the hotel is surrounded by Lotte Department Store, duty-free shops, Myeondong, Namdaemun, Deoksugung, Gyeongbok Palace, it is the best place for tourism and shopping.

### ■ Distance

- Up to an hour and half distance from Incheon International Airport (When using limousine bus or subway)
- 5 minute walk to the Seoul City Hall

### ■ Homepage

- [http://www.newkukjehotel.com/info/hotel\\_access\\_e.asp](http://www.newkukjehotel.com/info/hotel_access_e.asp)

## 2. Currency Exchange

Upon arrival, inbound travelers can easily convert their money into the local currency at bank branches and money changers located in the airport. The following banks and 24/7 service desks are available and located in Incheon International Airport. Please check the operating hours of the exchange booths in advance, since hours may change according to flight schedules.



### ***Korea Exchange Bank – Incheon International Airport branch***

- **Services provided:** General banking, currency exchange, traveler's checks, etc.
- **Location of branch:** Passenger Terminal, B1 (West)
- **Tel:** +82-32-743-222/ **Operating hours:** 09:00-16:00 (currency exchange: 06:00-21:00)
- **365 Day-a-Year branches:** <http://www.keb.co.kr>

### ***Exchange service centers open 24/7 at Incheon International Airport***

- **Services provided:** General banking, currency exchange, traveler's checks, etc.
- **Servicing banks:** Korea Exchange Bank & Woori Bank
- **For more details, check the official [Incheon International Airport](#) webpage**

### ***Shinhan Bank Currency Exchange***

- **Services provided:** General banking, currency exchange, traveler's checks, etc.
- **Location of branch:** Passenger Terminal, B1, transportation center
- **Tel:** +82-32-743-5100/ **Operating hours:** 09:00-16:00 (currency exchange: 06:00-21:00)
- **Website:** <http://www.shinhan.com/en/index.jsp>

### ***KEB Hana Currency Exchange***

- **Services provided:** General banking, currency exchange, traveler's checks, etc.
- **Location of branch:** Passenger Terminal, B1, in the middle of Gates 9 and 10
- **Tel:** +82-32-743-2220/ **Operating hours:** 09:00-16:00 (currency exchange: 06:00-21:00)

### ***Woori Bank Currency Exchange***

- **Services provided:** General banking, currency exchange, traveler's checks, etc.
- **Location of branch:** Passenger Terminal, B1 (East)
- **Tel:** +82-32-743-1050/ **Operating hours:** 09:00-16:00
- **Website:** <http://www.wooribank.com>

### 3. Other Information

---

#### *Electricity and Voltage*

The standard voltage in Korea is 220 volts (and 60 Hertz, or cycles), and the outlet has two round holes. If you do not have a multi-voltage travel adapter, you can borrow one from your hotel's front desk for free of charge (however, some establishment may request a minimal fee as deposit, covering for possible loss). If you would like to purchase one in Korea, you can find them at the airport, any of the retail stores, major duty-free shops, convenience stores or even stationery stores.

#### *Emergency Situations - Helpful Numbers*

- Police Department Tel: 112
- Fire Department Tel: 119
- Medical Emergencies Tel: 1339

#### *1330 Korea Travel Hotline*

- Website: [www.visitkorea.or.kr](http://www.visitkorea.or.kr) (Korean, English, Japanese, Chinese)

#### *Diplomatic Missions in Korea*

Website: [www.mofa.go.kr](http://www.mofa.go.kr) (Korean, English)

#### *Lost 112 (Lost and Found Information)*

- Tel: 182
- Address: 97, Tongil-ro, Seodaemun-gu, Seoul
- Website: [www.lost112.go.kr](http://www.lost112.go.kr) (Korean, English, Japanese, Chinese)

#### *Karl Polanyi Institute Asia*

Tel: 82-(0)2-383-3757/ (In Korea) 02-383-3457

Youn Kyung Woo (Conference Secretary): 82-10-4860-3965/ (In Korea) 010-4860-3965